

Who Is The Programme For?

- ▶ School aged children who have engaged in harmful sexual behaviour and who are now ready to stop this behaviour with the help of their families/ whanau/ caregivers, and staff at STOP.
- ▶ Children who are living in a safe, stable and supportive living environment.

About STOP Trust

STOP was established in 1988 to provide community based treatment programmes for adults and adolescents who have sexually abused others.

STOP is a charitable trust independent of government agencies and is funded through a range of sources.

The **STOP** Children's Programme is staffed by trained professionals experienced in treatment of children who have engaged in sexually reactive and harmful sexual behaviour.

STOP is a community-based programme that responds to the issues of abuse in the context of family / whanau and community safety.

STOP understands that children who engage in harmful sexual behaviour need to accept responsibility for their actions and need to

How to refer:

Referrals are accepted from Child, Youth and Family Service, health professionals, counsellors, police, school principals, school social workers, and parents. Initial contact should be made by telephone.

To Contact **STOP** Children's Programme:

Lyn Jansen
Team Leader

STOP Adolescent and Children's Programmes
126 Waimairi Rd, Ilam
P O Box 6236, Upper Riccarton
CHRISTCHURCH 8442

Phone: (03) 374 5010
Fax: (03) 374 9030
Email: lyn@stop.org.nz

Nelson Adolescent and Children's Programme
Contact: Maureen Lorimer
Phone: (03) 371-2793
Email: maureen@stop.org.nz

This programme is supported by the Christchurch City Council and Child, Youth and Family Service.



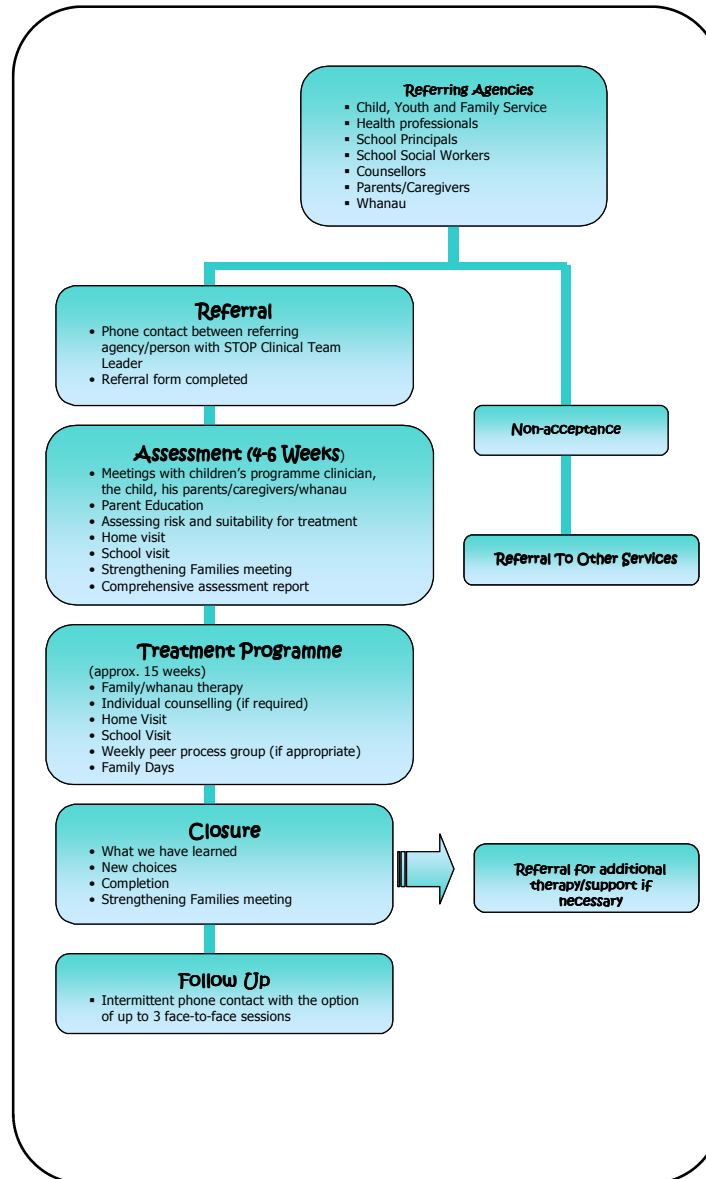
**Promoting children
being children
in safe ways**

Programme Goals

To help school aged children who have engaged in sexualised behaviour to :-

- ▶ Stop their harmful sexual behaviour.
- ▶ Be clear on what is OK and not OK sexual behaviour.
- ▶ Understand and take responsibility for their harmful sexual behaviour.
- ▶ Understand the thoughts and feelings they had prior to sexually harming another child.
- ▶ Understand the impact of their harmful sexual behaviour, and how that may have affected others.
- ▶ Make safe choices for the future.
- ▶ Recommend helpful options if they have been sexually harmed themselves.

STOP Children's Programme Process Chart



When Does Sexual Behaviour Become Harmful?

The Programme provides an initial assessment and treatment, if necessary, based on a continuum model of definable groups.

- ▶ **Normal Sexual Exploration**
Where similar aged children explore each others bodies visually and tactilely in the context of play e.g. playing doctor and patient, playing house.
- ▶ **Sexually Reactive Behaviour**
Where children may have been sexually abused or been over-exposed to sexual stimulation e.g. poor boundaries around sexual behaviour of adults in the living environment or exposure to explicit media. These children may act in a sexually harmful way.
- ▶ **Harmful Sexual Behaviour**
Where children engage in coercive and/or forceful sexual behaviour towards another child.

The STOP Children's Programme is based on programmes that have proved effective in North America, the United Kingdom, Australia and New Zealand.